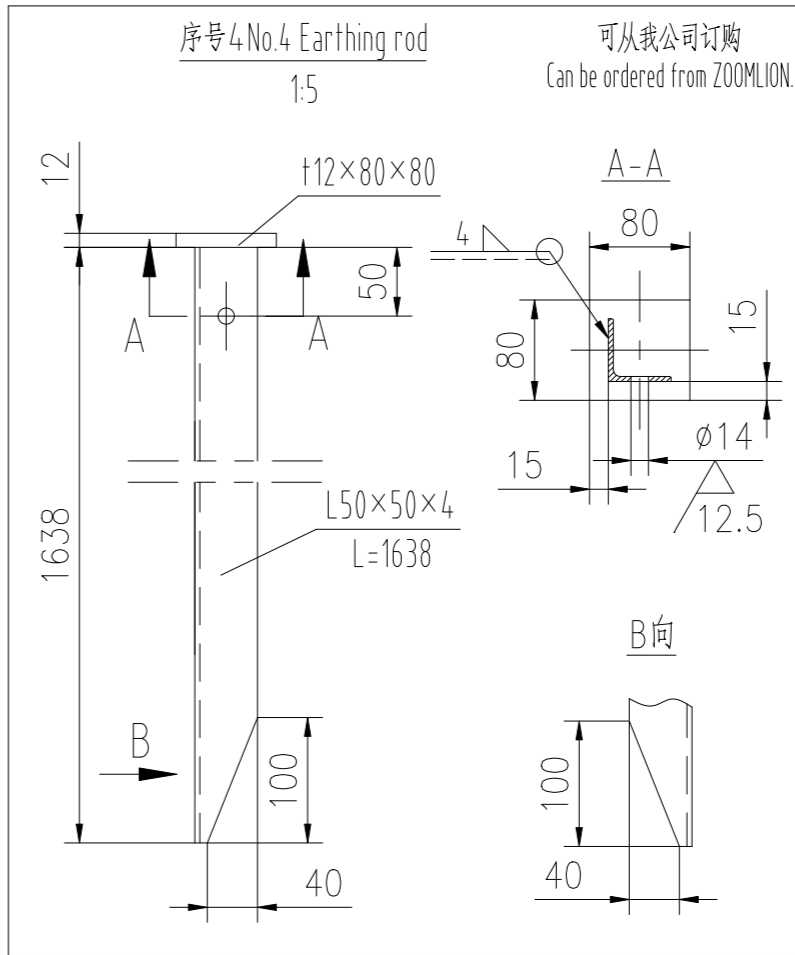
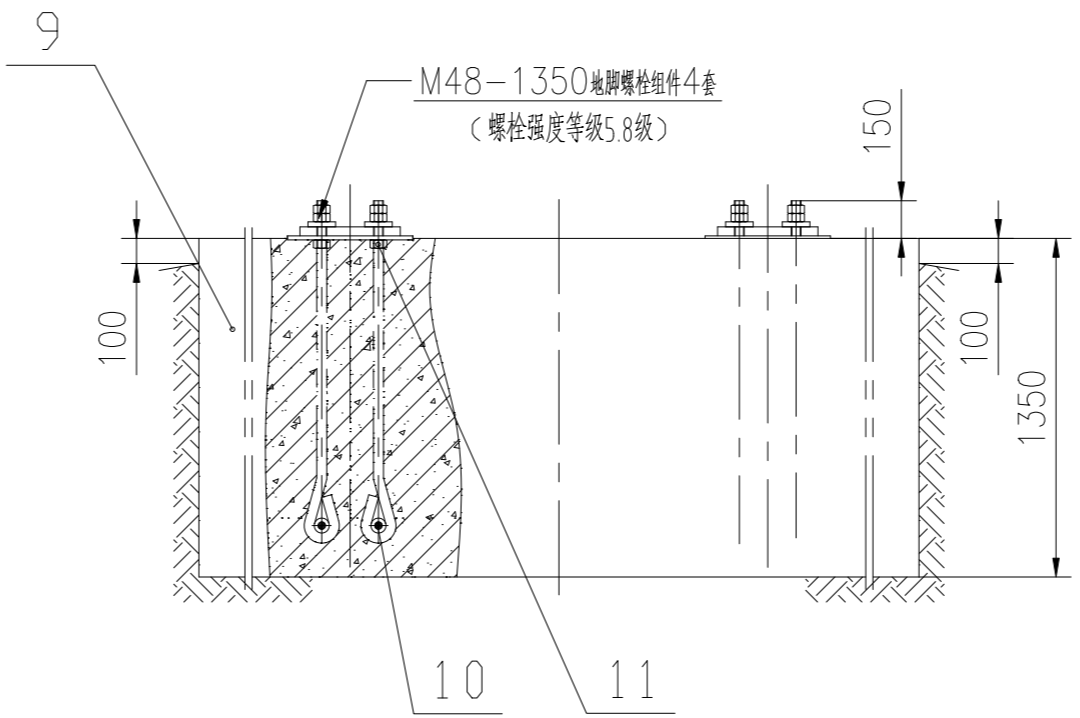
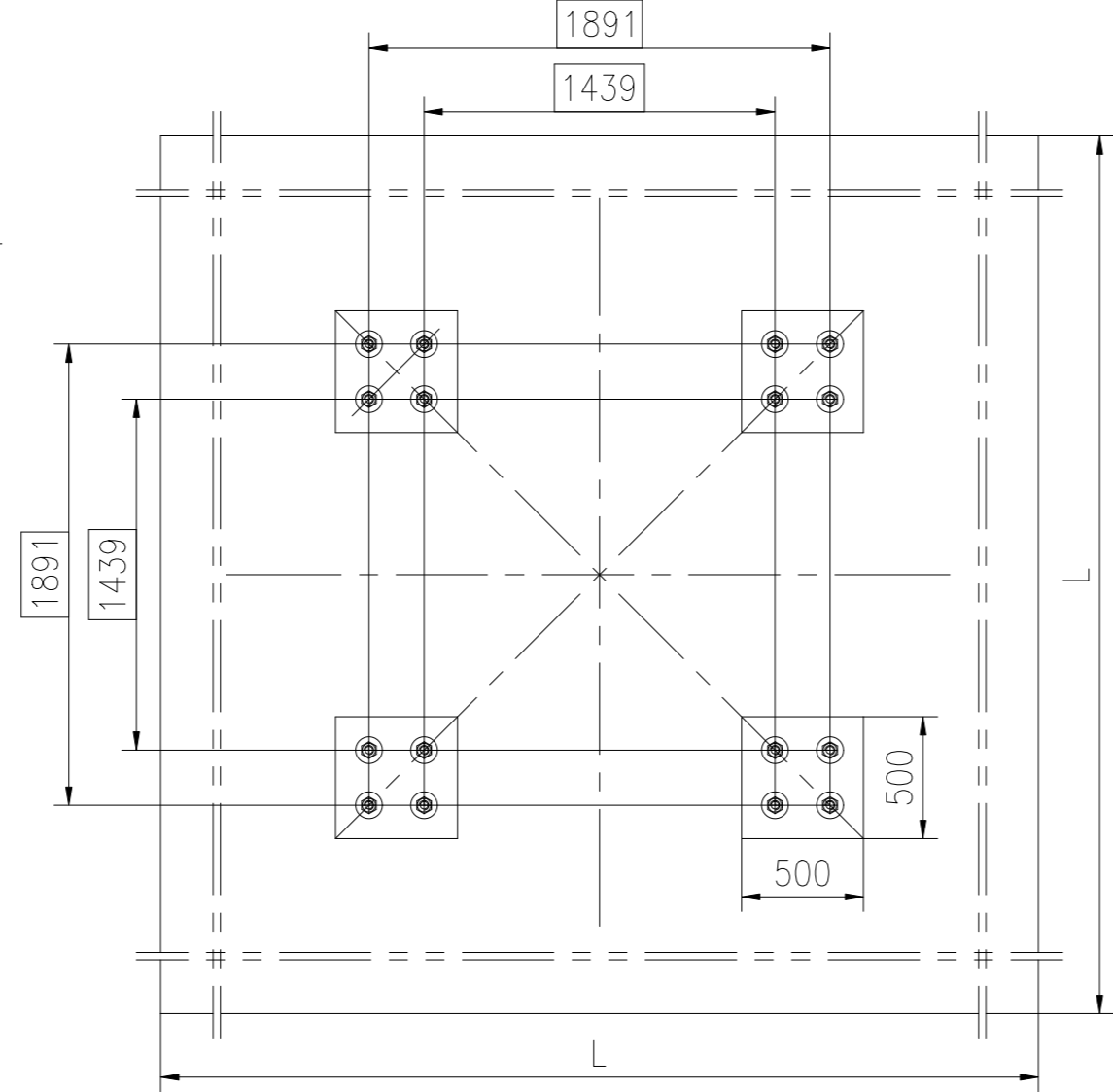
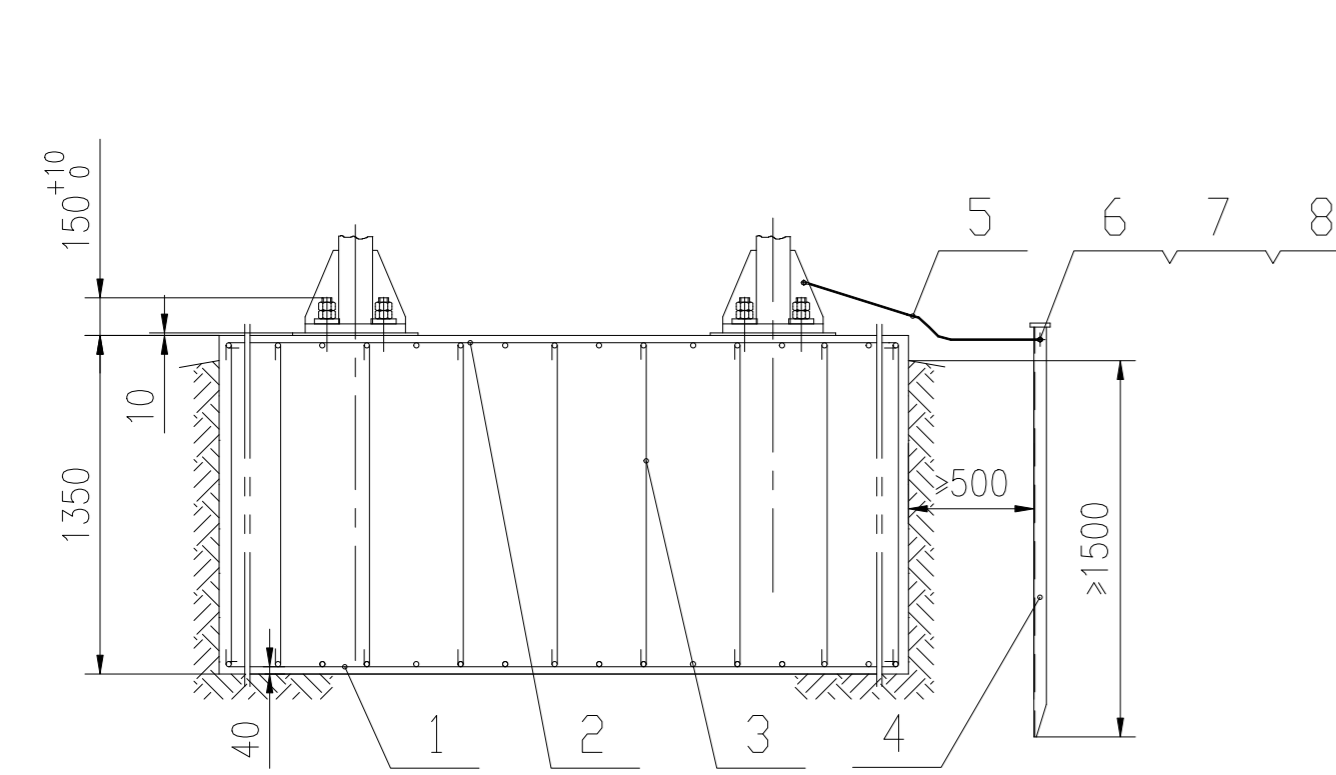
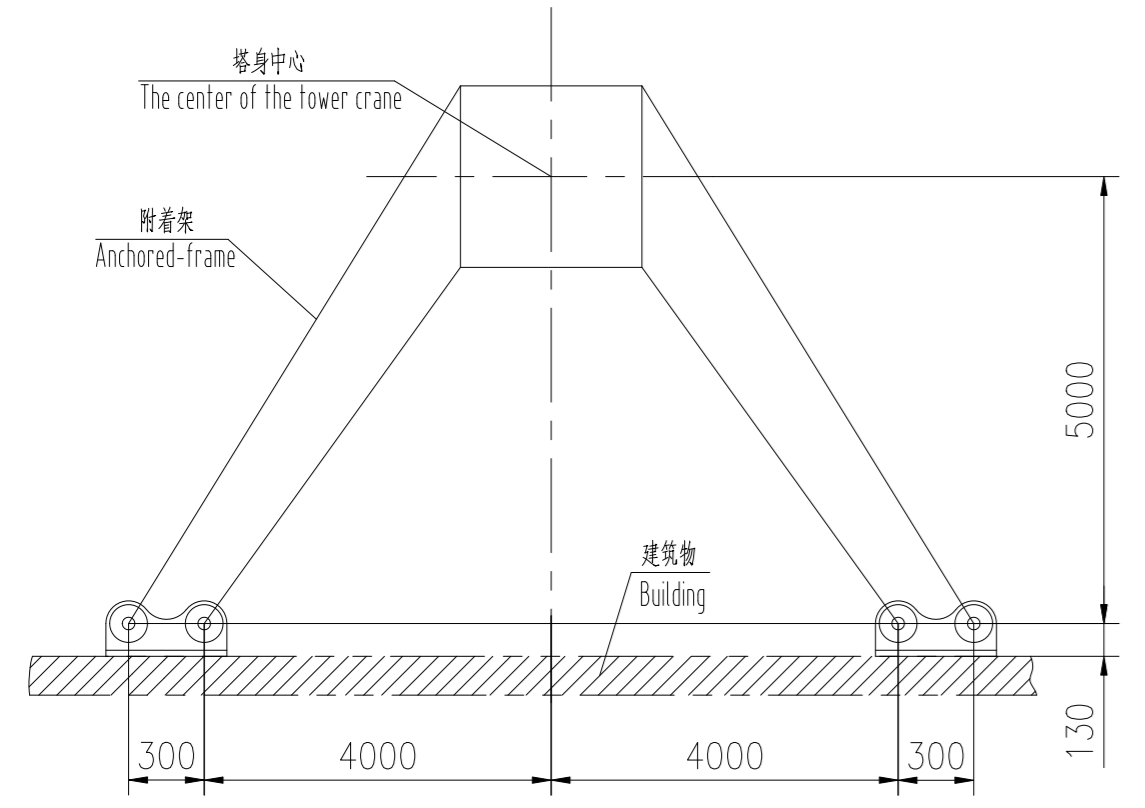


0000701V66709Z000

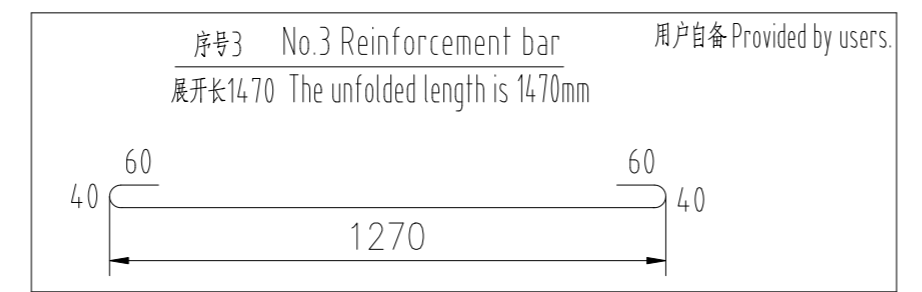
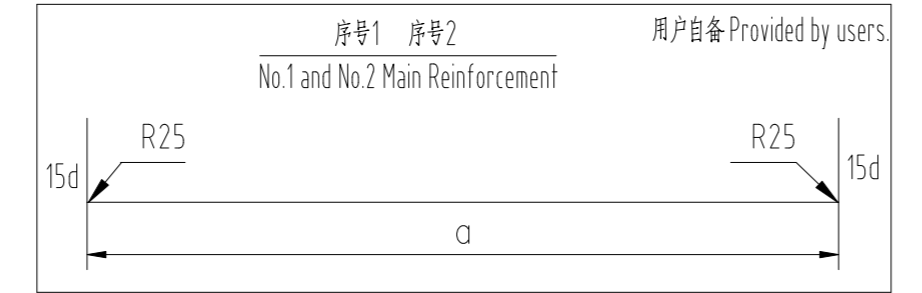
技术要求 Specifications



- 基础开挖至老土(基础承载力必须达到表中要求)找平,回填100mm左右卵石夯实,周边配模或砌砖后再行编筋浇筑混凝土,基础周围地面低于混凝土表面100mm以上以利排水,周边若配模,拆模以后回填卵石;
Excavate a trench to hard formation until the ground bearing pressure accords with the value in the following table, and make the bottom level. And then backfill and tamp 100mm gravel stratum. After making formwork or laying bricks for the side walls, pour concrete into pre-made reinforced rod net. The concrete block surface should be 100mm higher than neighboring ground for the drainage of storm water, then removal the formwork and backfill the neighboring ground with gravels.
- 垫板下砂填充率>95%,垫板上平面保证水平,垫板允许嵌入砂内5~6mm;
Concrete filling rate under pallet should be more than 95%. The upper plane of the four pallets should be within the same level plane and the pallet are allowed to be inserted into concrete for 5-6mm.
- 允许在固定基节与垫板之间加垫片,垫片面积必须大于垫板面积的90%,且每个支腿下面最多只能加两块垫片,确保固定基节的安装后的水平度小于1/750,其中心线与水平面垂直度误差为1.5/1000;
It is allowed to insert pads but no more than 2 pads into the intervals of the base tower section and the packings. The area of pad should be more than 90% area of the pallet to ensure that the planeness tolerance is less than 1/750 after installing the base tower section, and vertical tolerance of central line with level plane is within 1.5/1000.
- 四组地脚螺栓(C16根)相对位置必须准确,组装后必须保证地脚螺栓孔的对角线误差不大于2mm,确保固定基节的安装地脚螺栓不允许焊接,也不允许敲击, M48-5.8级地脚螺栓预紧力为295kN.
The relative position of the 4 sets of embedded bolts must be correct, and the length tolerance of the diagonal line should be no more than 2mm after assembling, ensuring the mounting of the base tower section. The bolts mustn't be welded or struck hard. The design preloading force of anchor bolts M48-5.8 is 295kN.
- 螺栓需与基础底筋相连,混凝土标号C35,养护期大于15天;
The embedded bolts should be connected with the reinforcement of lower layer. The concrete strength grade shall be no less than C35. The curing duration of concrete is more than 15 days.
- 件4插入地面以下部分长度必须>15米,不要与建筑物基础的金属加固件连接,件5为横截面积不小于16mm²的绝缘铜电缆, NO4 必须打入15m 到地面,不要与建筑物基础的金属加固件连接,件5为横截面积不小于16mm²的绝缘铜电缆, NO4 必须打入15m 到地面. The NO.5 is insulated copper cable with at least 16mm².
- 该基础用于独立高度4.32m的T6515-10B/T6515-8B塔机,塔机基础荷载见说明书,基础的地基承载力、尺寸L及钢筋布置参见下表的要求. The foundation is fit for T6515-10B/T6515-8B with the maximum free-standing height of 4.32m and the load on the foundation is shown in the manual, the foundation load-bearing capacity, the dimension L of the foundation and the layout of the reinforcement are shown as the following table:



标准附着平面图 Standard anchored plane graph
注:非标时,请与本公司联系. If the condition of the site is different with the graph, please contact us.



序号 No.	产品编码 Product Code	代号 Code	名称 Designation	规格 Dimension	数量 Qty	材质 Material	重量 Weight	备注 Remark
11	104.02014.03		螺母 Nut	M48-6	16		0.45	7.2
10	000260499AT040060		圆钢 Rod	φ30-400	8	Q235B	2.2	17.6
9	000260499AT040050		混凝土 Concrete		1	C35		
8	104.02000.96		螺母 Nut	M12-8	1		0.01	0.01
7	104.03000.54		垫圈 Spring washer	12	1	65Mn	0	0
6	104.00001.01		螺栓 Bolt	M12x40-8.8	1		0.04	0.04
5	000260499AT040040		接地线 Earthing cable		1			
4	000200115B0000200		接地杆 Earthing rod		1	焊件	5.6	5.6
3	000260499AT040030		架立筋 Reinforcement bar	φ12-14.70	225	HPB300	1.31	294.75
2	000260499AT040020		主筋B Main reinforcement B	φ22	58	HRB400	18.14	1052.12
1	000260499AT040010		主筋A Main reinforcement A	φ22	58	HRB400	18.14	1052.12

L	主筋 A Main reinforcement A	主筋 B Main reinforcement B	a	地耐力 MPa Earth bearing pressure	混凝土 m³ Concrete volume	重量 t Concrete weight	3号件数量 Quantity of No.3
5500	纵向各29-φ22 Lengthwise and crosswise	纵向各29-φ22 Lengthwise and crosswise	5420	0.20	40.8	98	225
6000	纵向各32-φ22 Lengthwise and crosswise	纵向各32-φ22 Lengthwise and crosswise	5920	0.14	48.6	117	256
6500	纵向各35-φ22 Lengthwise and crosswise	纵向各35-φ22 Lengthwise and crosswise	6420	0.12	57	137	324

				钢筋混凝土 Reinforced Concrete				中联重科股份有限公司			
								预埋螺栓基础 Foundation with embedded bolts			
设计 Design	刘珏	标准化 Standardization	日期 Date	图样标记 Drawing Mark	版本 Version	重量 Weight	比例 Scale	T6515-10B-LGJ			
校对 Check	孙旭国	审定 Approval	日期 Date		a	2429.447	1:30	000260499AT040000			
审核 Audit	郑昌明	批准 Approval	日期 Date	共 1 页		第 1 页					
工艺 Technology	张剑锋	日期 Date	2019-2-18								

借通用件登记
描图
校描
旧底图总号
签字
日期

A版